

ROVLocator

Datasheet



From **\$3,490** – Track vehicle's location in real time to improve navigation accuracy and mission efficiency.

The ROV Locator delivers dependable, real-time underwater positioning for ROVs, AUVs, and diver-operated systems. Designed for precision and operational simplicity, these compact acoustic tracking systems provide accurate range and bearing information—allowing operators to reliably locate, track, and navigate in the most challenging environments.

From entry-level to high-performance configurations, the ROV Locator lineup is engineered for seamless integration with underwater vehicles, offering stable tracking, fast update rates, and intuitive visualization through SonarView.

ROV Locator— Track with precision. Navigate with certainty. Complete missions with confidence.

Product Strengths

- Reliable Real-Time Underwater Positioning
- High Update-Rate Tracking Performance
- Vehicle-Optimized Design (Compact, Lightweight, Low Power)
- Intuitive Visualization with Real-Time Map-Based Interface
- Cost-Effective Professional Positioning



To Learn More

Cerulean Sonar

www.ceruleansonar.com

ROVLocator

Datasheet



	ROVL MK II GNSS Sync	ROVL MK III Acoustic Sync	ROVL MK V Network
Bundled Price	\$3490	\$5990	\$4750
Topside			
Depth Rated	50m	50m	50m
Update Rate	1Hz	1Hz	1-5 Hz (range dependent)
Ping Frequency	-	25kHz	-
Transmit Acoustic Power Level, typical, re: 1uPa at 1 meter distance	-	185dB	-
Slant range error accumulation	1 m/hr	-	-
Typical Maximum Usable Range	500m	300m	300m
V-In Power	5V to 28V DC, -1.5 Watt (note 1)	5V to 28V DC, -1.5 Watt (note 1)	5V to 28V DC, -1.5 Watt (note 1)
Data Interface (default)	USB	USB	100BaseT Ethernet
Serial Comms Voltage Levels	3.3V TTL or 5V TTL, auto sense	3.3V TTL or 5V TTL, auto sense	3.3V TTL or 5V TTL, auto sense
Weight in Water	-65g	-120g	-75g
Deepside			
Depth Rated	300m	300m	300m
Transmit Acoustic Power Level, typical, re: 1uPa at 1 meter distance	185dB	185dB	185dB
V-in Power Allowance Voltage, DC	5V to 28V DC (note 1)	5V to 28V DC (note 1)	10V to 28V DC (note 2)
V-in Power @5V	1.4W	1.7W average 2.9W peak	-
V-in Power @16V	Not given	1.3W average 4.1W peak	3W
V-in Power @28V	1.6W	Not given	Not given
Data Interface (default)	Serial	100BaseT Ethernet	100BaseT Ethernet
Serial Comms Voltage Levels	3.3V TTL or 5V TTL, auto sense	3.3V TTL or 5V TTL, auto sense	3.3V TTL or 5V TTL, auto sense
Weight in Water	-100g	-100g	170g

Subject to change. See our website for the most current information.

ROV Locator MK II – Simple, Cost-Effective Positioning Awareness.

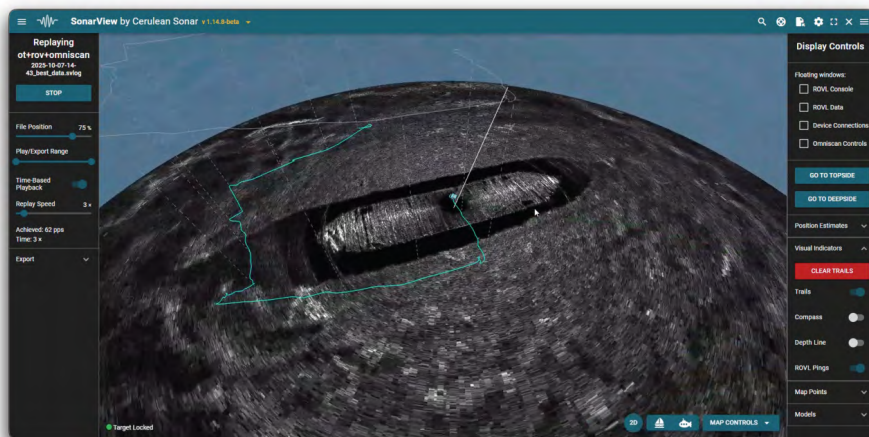
Tracking an ROV during a routine pipeline survey, with a transmitter on the ROV and a topside receiver time synchronized to GNSS before deployment. The system provides real-time approximate position and range, guiding the ROV to targets and back to launch without costly survey-grade USBL.

ROV Locator MK III – Continuous Underwater Tracking Without Timebase Drift.

An offshore engineering team deploys an ROV with a transponder and topside transceiver to inspect submerged caissons. The Mk III's acoustic interrogation maintains stable range and bearing without drift, enabling safe navigation and reliable positioning during long subsea missions.

ROV Locator MK V – High-Rate Network-Synchronized Tracking for Complex Operations.

An ROV requiring high update rates for tight navigation near subsea structures uses the Mk V, with Ethernet-based synchronization between the topside and the vehicle. This enables up to 5 Hz updates, improving performance in noisy environments and delivering fast, accurate location.



Cerulean Sonar

www.ceruleansonar.com