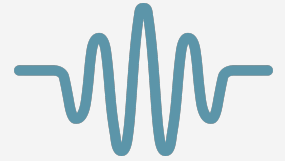


Omniscan

Datasheet



From **\$2,490** – visualize imagery in environments you are discovering for the first time.

From forward-looking obstacle avoidance to detailed side-scan mapping, the Omniscan 450 FS, Omniscan 450 SS, and Omniscan Compact offer a range of form factors to produce crisp, high-resolution imagery. Designed with larger piezo elements and optimized acoustic architecture, the Omniscan family provides exceptional target definition, reliability, and ease of integration.

Built for seamless integration, the Omniscan 450 series features native Ethernet networking, straightforward configuration through SonarView software, and compatibility with a wide range of underwater vehicles.

Omniscan— Clear vision underwater where precision, reliability, and simplicity matter most.

Product Strengths

- Excellent (Real Time) Situational Awareness
- Crystal Clear Acoustic and Persistent Imaging
- Longer Range Detection
- Modern Ethernet Architecture
- Compact, Vehicle-Ready Design



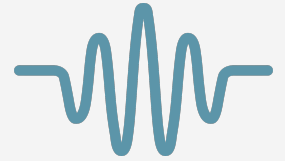
To Learn More

Cerulean Sonar

www.ceruleansonar.com

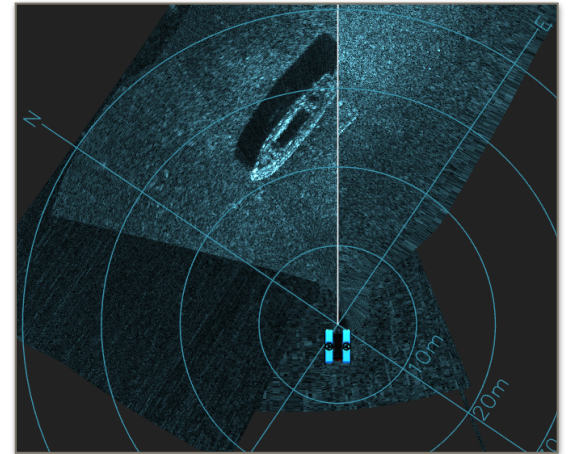
Omniscan

Datasheet



	450 Compact	450 FS 100m	450 FS 300m	450 SS
Price	\$2,990	\$2,490	\$2,990	\$2,590
Frequency (nominal)	450 kHz	450 kHz	450 kHz	450 kHz
Range Resolution	up to 1/1200th of range	up to 1/1200th of range	up to 1/1200th of range	up to 1/1200th of range
Maximum Ping Rate	20 Hz	20 Hz	20 Hz	20 Hz
Power	10-30V, 10 watts max (pinging)	10-30V, 10 watts max (pinging)	10-30V, 10 watts max (pinging)	10-30V, 10 watts max (pinging)
Data Interface	100BaseT Ethernet	100BaseT Ethernet	100BaseT Ethernet	100BaseT Ethernet
Internal Ethernet Switch	Yes	No	No	No
Internal Electronics	Yes	Yes	Yes	No
Electrical Connection	single cable w/4 pin JST for Ethernet data + 1 wire pair for power. Options for the 3 ports including Blue Trail bulkhead connector(s).	single cable w/4 pin JST for Ethernet data + 1 wire pair for power	single cable w/4 pin JST for Ethernet data + 1 wire pair for power	PCB assembly has 3 position transducer interface, 4 pin JST for Ethernet interface, 2 pin JST for power.
Maximum Range	100m	120m	120m	150m
Beam Width	1.1 deg	0.8 deg	0.8 deg	0.5 deg
Beam Height	50 deg	50 deg	50 deg	50 deg
Vertical Beam Angle	10 deg downward	0 deg	0 deg	0 deg
Weight in Air	934g	440g	825g	300g (transducer only)
Weight in Water	400g	-60g (buoyant)	325g	130g (Transducer only)
Depth Rated	300m	100m	300m	300m

Subject to change. See our website for the most current information.



Omniscan 450 FS — Forward Looking Obstacle Avoidance.

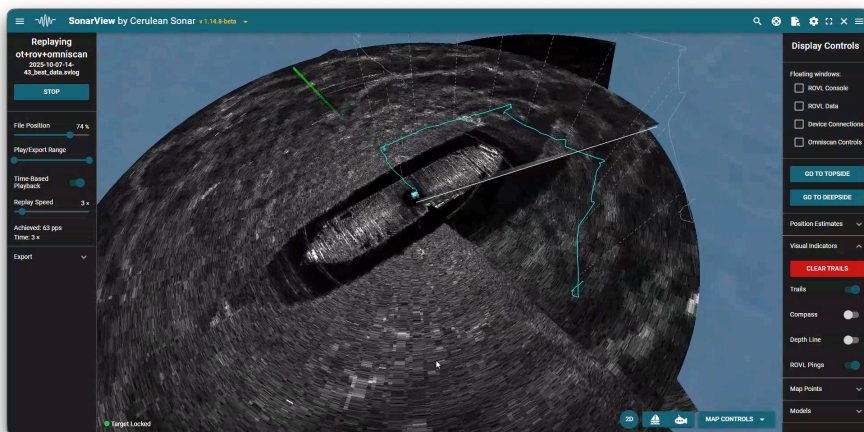
To see ahead in real time. The pilot detects rocks, debris, and structural crossings before reaching them, preventing collisions and enabling safe navigation along the pipeline even in turbid or dark conditions.

Omniscan 450 SS — Seafloor Mapping & Object Detection.

Producing high-resolution imagery of the seabed, revealing debris, cables, rocks, and previously unknown objects, allowing planners to avoid hazards.

Omniscan Compact 450 FS — Capability in a Smaller Footprint.

delivering the same imaging performance, while integrating an onboard Ethernet switch that simplifies network architecture and reduces cabling to the vehicle.



Cerulean Sonar

www.ceruleansonar.com